

# RADIAL CHOKE COIL

RCB1112 SERIES

## 1. PART NO. EXPRESSION :

R C B 1 1 1 2 3 R 3 M Z F  
 (a) (b) (c) (d)(e)(f)

- (a) Series code
- (b) Dimension code
- (c) Inductance code : 3R3 = 3.3uH
- (d) Tolerance code : K = ±10%, M = ±20%
- (e) X, Y, Z : Standard part
- (f) F : Lead Free

## 2. CONFIGURATION & DIMENSIONS :

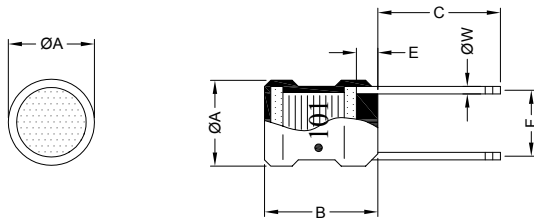


Fig : A ( 3.3uH - 47uH )

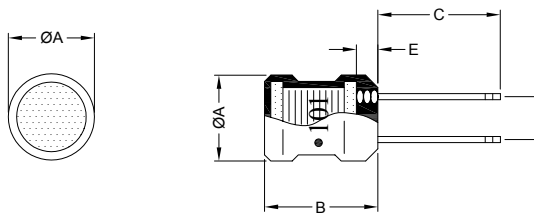


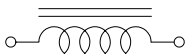
Fig : B ( 68uH - 15mH )

Marking :  
 " ● " : Start

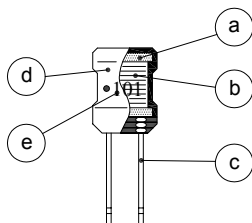
Unit:m/m

ØA	B	C	E	F (Fig. A)	F (Fig. B)	ØW (Fig. A)	ØW (Fig. B)
11.7±0.8	12.0±1.0	15.0±5.0	2.5 Max.	9.0±1.0	7.0±0.8	Per spec.	0.80 Ref.

## 3. SCHEMATIC :



## 4. MATERIALS :



- (a) Core : DR Ferrite Core
- (b) Wire : Enamelled Copper Wire
- (c) Lead : Tinned Copper Wire
- (d) Tube : Shrinkable Tube
- (e) Ink : Bon Margue

## 5. GENERAL SPECIFICATION :

- a) Temp. rise : 20°C Max. at rated current
- b) Storage temp. : -40°C to +125°C
- c) Operating temp. : -25°C to +105°C



RoHS Compliant

NOTE : Specifications subject to change without notice. Please check our website for latest information.

25.04.2008



SUPERWORLD ELECTRONICS (S) PTE LTD

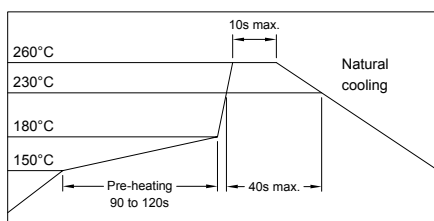
### 6. ELECTRICAL CHARACTERISTICS :

Part No.	Inductance ( $\mu$ H )	Test Frequency ( Hz )	Q Ref.	Test Frequency ( Hz )	SRF ( MHz ) Typ.	RDC ( $\Omega$ ) Max.	IDC ( A ) Max.	$\varnothing$ W m/m
RCB11123R3MZF	3.3 $\pm$ 20%	1V/1K	90	1V/7.96M	59.00	0.008	5.600	0.8
RCB11124R7MZF	4.7 $\pm$ 20%	1V/1K	100	1V/7.96M	45.00	0.009	4.700	
RCB11126R8MZF	6.8 $\pm$ 20%	1V/1K	80	1V/7.96M	34.00	0.012	3.900	0.7
RCB1112100MZF	10.0 $\pm$ 20%	1V/1K	140	1V/2.52M	26.00	0.015	3.200	
RCB1112150MZF	15.0 $\pm$ 20%	1V/1K	120	1V/2.52M	19.00	0.019	2.600	
RCB1112220KZF	22.0 $\pm$ 10%	1V/1K	110	1V/2.52M	14.00	0.026	2.200	0.6
RCB1112330KZF	33.0 $\pm$ 10%	1V/1K	100	1V/2.52M	10.00	0.045	1.800	
RCB1112470KZF	47.0 $\pm$ 10%	1V/1K	90	1V/2.52M	8.30	0.056	1.500	0.8
RCB1112680KZF	68.0 $\pm$ 10%	1V/1K	80	1V/2.52M	6.70	0.092	1.200	
RCB1112101KZF	100.0 $\pm$ 10%	1V/1K	70	1V/796K	5.40	0.120	1.000	
RCB1112151KZF	150.0 $\pm$ 10%	1V/1K	70	1V/796K	4.30	0.200	0.820	
RCB1112221KZF	220.0 $\pm$ 10%	1V/1K	40	1V/796K	3.40	0.250	0.680	
RCB1112331KZF	330.0 $\pm$ 10%	1V/1K	40	1V/796K	2.70	0.420	0.550	
RCB1112471KZF	470.0 $\pm$ 10%	1V/1K	30	1V/796K	2.30	0.510	0.460	
RCB1112681KZF	680.0 $\pm$ 10%	1V/1K	30	1V/796K	1.90	0.790	0.380	
RCB1112102KZF	1000.0 $\pm$ 10%	1V/1K	40	1V/252K	1.60	1.300	0.310	
RCB1112152KZF	1500.0 $\pm$ 10%	1V/1K	30	1V/252K	1.30	1.700	0.250	
RCB1112222KZF	2200.0 $\pm$ 10%	1V/1K	60	1V/252K	1.10	2.900	0.210	
RCB1112332KZF	3300.0 $\pm$ 10%	1V/1K	50	1V/252K	0.90	3.700	0.170	
RCB1112472KZF	4700.0 $\pm$ 10%	1V/1K	50	1V/252K	0.76	5.600	0.140	
RCB1112682KZF	6800.0 $\pm$ 10%	1V/1K	60	1V/252K	0.65	9.400	0.120	
RCB1112103KZF	10000.0 $\pm$ 10%	1V/1K	80	1V/79.6K	0.53	12.000	0.100	
RCB1112153KZF	15000.0 $\pm$ 10%	1V/1K	70	1V/79.6K	0.41	15.000	0.082	

\* Lead :  $\varnothing$ 0.6 ~  $\varnothing$ 0.8mm Soldering Copper Wire ( 3.3uH - 47uH )

Lead :  $\varnothing$ 0.8mm Tinned Copper Wire ( 68uH - 15mH )

#### RECOMMENDED SOLDERING CONDITIONS REFLOW SOLDERINGS



**RoHS Compliant**

NOTE : Specifications subject to change without notice. Please check our website for latest information.

25.04.2008

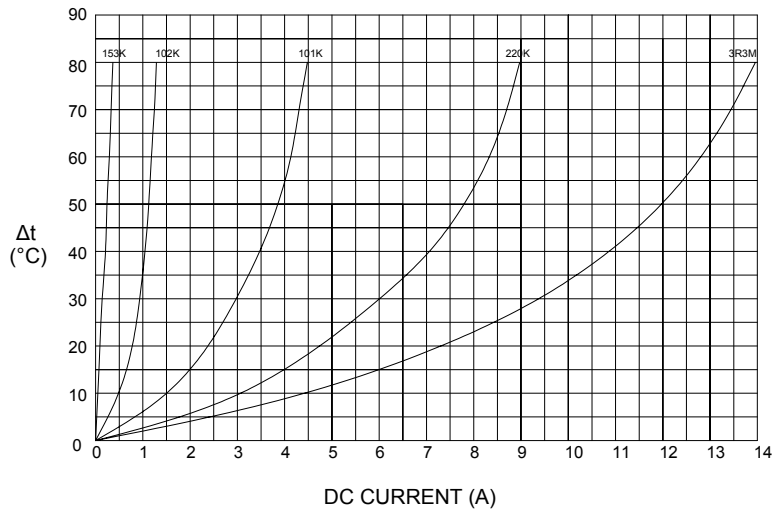


**SUPERWORLD ELECTRONICS (S) PTE LTD**

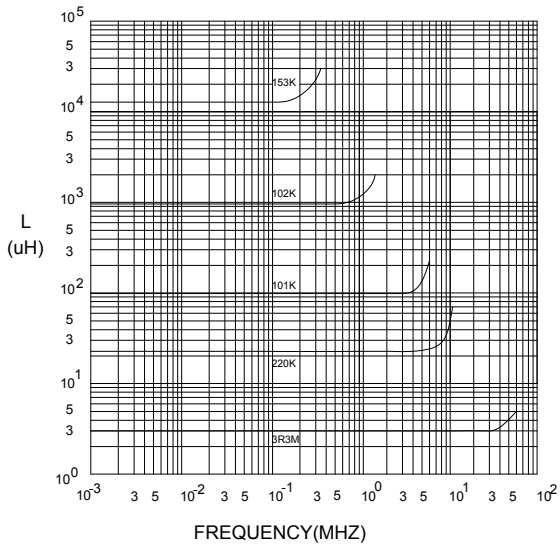
PG. 2

## 7. CHARACTERISTICS CURVES :

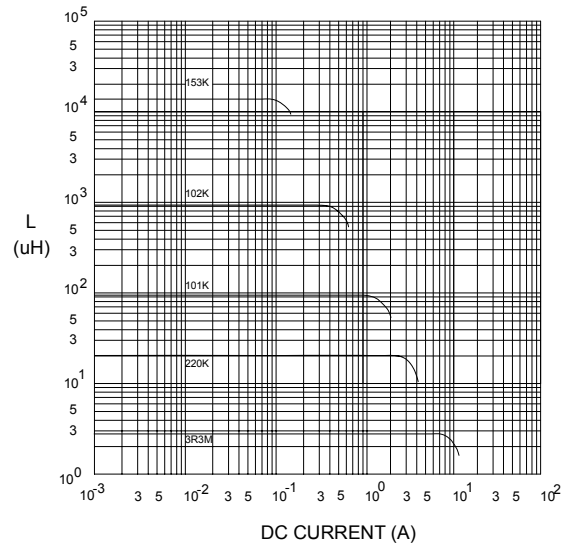
@ TEMP. RISE VS. DC SUPERPOSITION RESPONSE CURVE



@ INDUCTANCE VS. FREQUENCY RESPONSE CURVE



@ INDUCTANCE VS. DC SUPERPOSITION RESPONSE CURVE



NOTE : Specifications subject to change without notice. Please check our website for latest information.



**RoHS Compliant**

25.04.2008



**SUPERWORLD ELECTRONICS (S) PTE LTD**

# RADIAL CHOKE COIL

RCB1112 SERIES

8. UL CARD :

**OBMW2** **November 30, 2000**  
**Magnet Wire - Component**

**PACIFIC ELECTRIC WIRE & CABLE (SHENZHEN) CO LTD** **E201757**  
 607 BAOLONG INDUSTRIAL ESTATE LONGGANG, SHENZHEN  
 GUANGDONG CHINA

Mtl Dsg	Coating Type	TC	ANSI Type	TI
UEW/U	BC Polyurethane	—	—	130
PEW/U	Polyester	—	MW5-C	155°C
PEWH/U	Modified Polyester	—	MW30-C	180
PEW-NY/U	Polyester	Polyamide	MW24-C	155
HAI/U	Polyester(Amide)(Imide)	Polyamideimide	MW35,73	200
UEW-NY/U	Polyurethane	Polyamide	MW80-C	155
			MW28-C	130

**Marking: Company name and material designation or marked designation on package or reel, and Recognized Component Mark.**

**See General Information Preceding These Recognitions**

1/3/2001 Underwriters Laboratories Inc. Card 1 of 2

**YDPU8** **August 18, 1999**  
**Tubing Extruded Insulating Certified For Canada - Component**

**SHENZHEN CHANGBAO SPECIAL PLASTIC PRODUCTS CO LTD** **E180908**  
 SHENZHEN SCIENCE & INDUSTRY PARK NAN SHAN  
 SHENZHEN, GUANGDONG 518057 CHINA

Cat. No.	Max V	Max Temp C	Col Recognized	Max Temp Rated Oil Resistance *C	OFT Rated #
<b>Polyolefin heat shrinkable tubing.</b>					
Changbao 102	600	125	All	—	Yes

**#Tubing is considered to comply with the optional OFT flammability requirements only if it is so marked.**

**Marking: Company name, catalog number and temperature rating in degrees C appears on tubing, tags attached to both ends of the tubing or on the shipping spool label or smallest unit container and the Recognized Component Mark for Canada .**

**See General Information Preceding These Recognitions**  
 For use only in equipment where the acceptability of the combination is determined by Underwriters Laboratories Inc.

8/31/1999 Underwriters Laboratories Inc. Card 1 of 1



**RoHS Compliant**

NOTE : Specifications subject to change without notice. Please check our website for latest information.

25.04.2008